

### MACHINE BASES, WELDMENTS & TOOLING PLATES

- 5 Standard Models of Machine Bases
- Custom Fabrication per your Specifications
- Stainless Steel and Aluminum Fabrications
- Complete Turnkey Systems- Including Machining to your Specifications, Finish Paint or Powder Coating, and Plate Coatings
- Custom Tooling Plates and Dial Plates in Steel, Aluminum, or Stainless Steel

### SERVICES

- Contract CNC Machining (Machine Capacity up to 200")
- Blanchard Grinding up to 153" Diagonal
- Production Sawing
- Painting (Conventional Spray) of Enamel, Epoxy, and Polyurethane

### STEEL PLATE BURNING

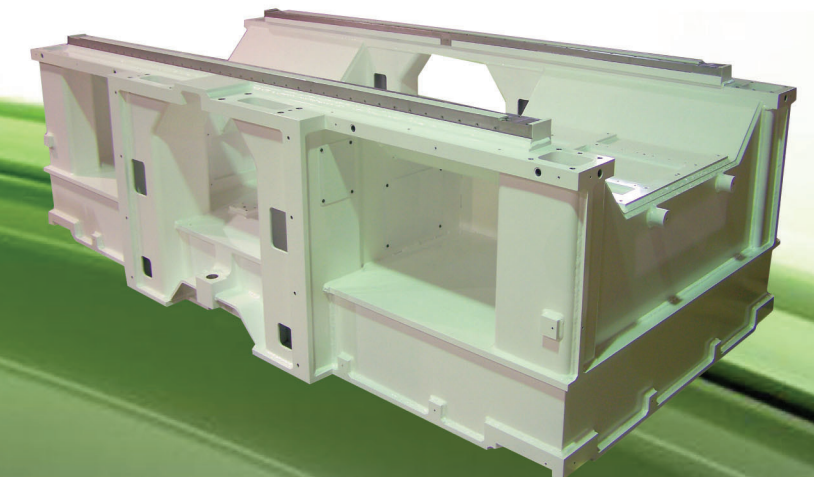
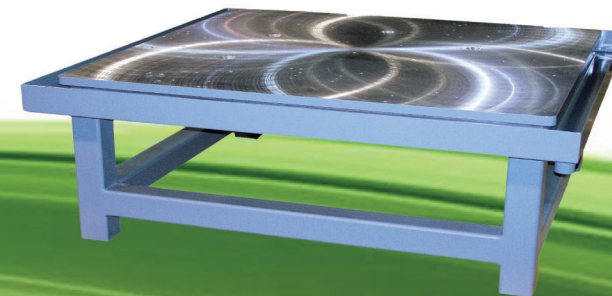
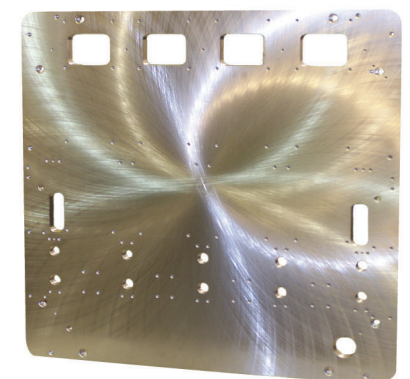
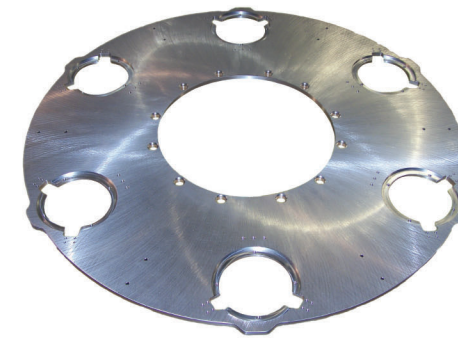
- A36 or 1020 Material
- Inventory in Excess of 100 Tons
- Thickness Ranging from 1/8" to 6-1/4"
- Burning Table Capacity 120" x 300"
- CNC Oxy-Fuel and High-Def Plasma Cutting
- Burnouts can be Shipped in 1 to 3 Days

### FACILITIES

- 2 Plants Totaling 42,000 sq. ft. of Manufacturing
- 13 Overhead Cranes with Capacity up to 40,000 lb.
- Climate Controlled Machining Facility
- 20 foot Paint Booth



# Inter-Lakes Bases, Inc.



Plant 1



Plant 2



Local Pick-Ups & Deliveries



## Inter-Lakes Bases, Inc.

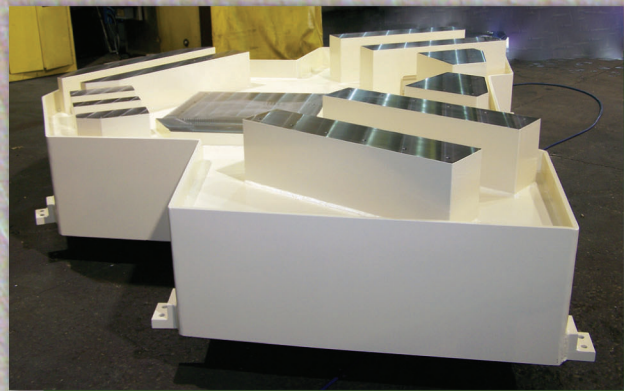
17480 Malyn Boulevard  
Fraser, MI 48026

**586-294-8120**

[www.interlakesbases.com](http://www.interlakesbases.com)  
Email: [sales@interlakesbases.com](mailto:sales@interlakesbases.com)

## Servicing Industry Since 1966





CUSTOM BASES



STANDARD BASES



RISERS, WELDMENTS, COLUMNS



TUBULAR FRAMES

# LOOK AT OUR CAPABILITIES



GRINDING



HIGH-DEF PLASMA CUTTING



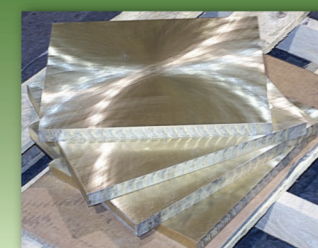
MACHINING



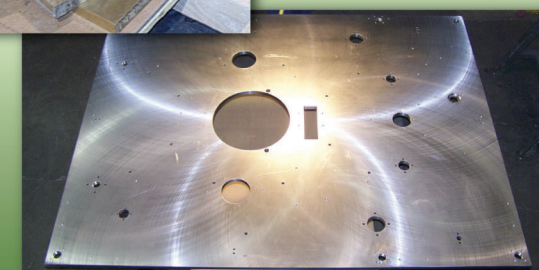
DIAL PLATES



STEEL / FLAME & PLASMA CUTTING



- Steel
- Aluminum
- Stainless Steel
- Bronze



GROUND & MACHINED PLATES



PAINTING & POWDER COATING